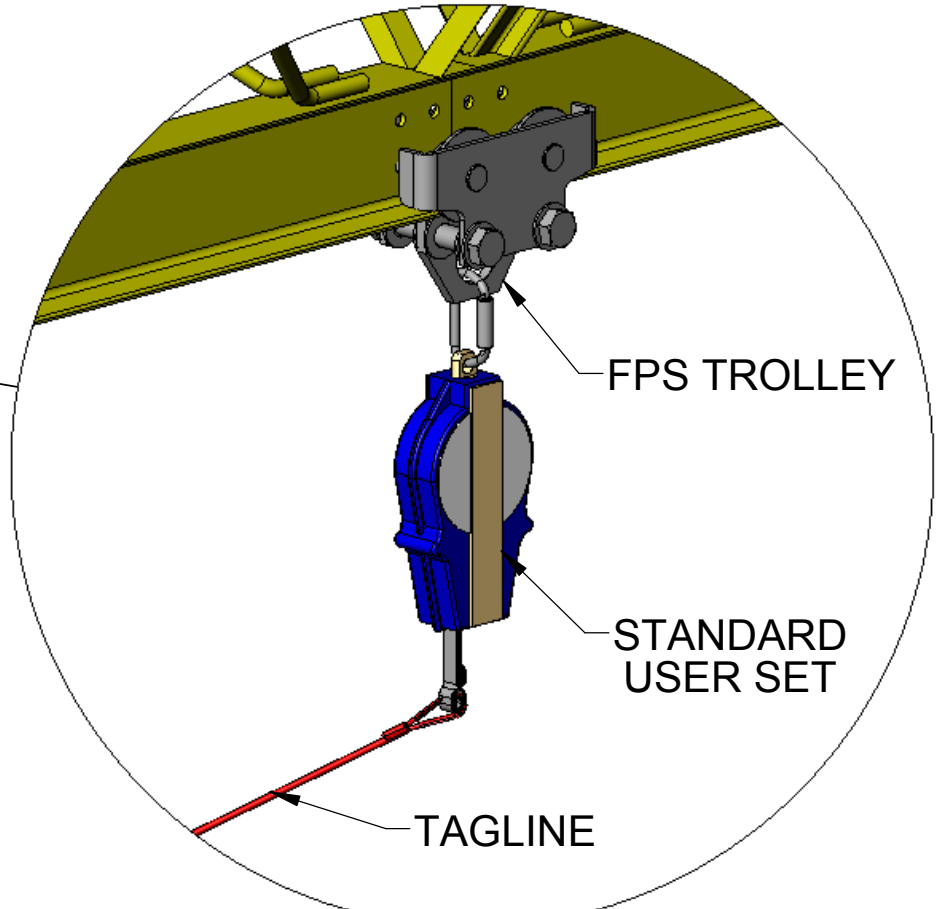
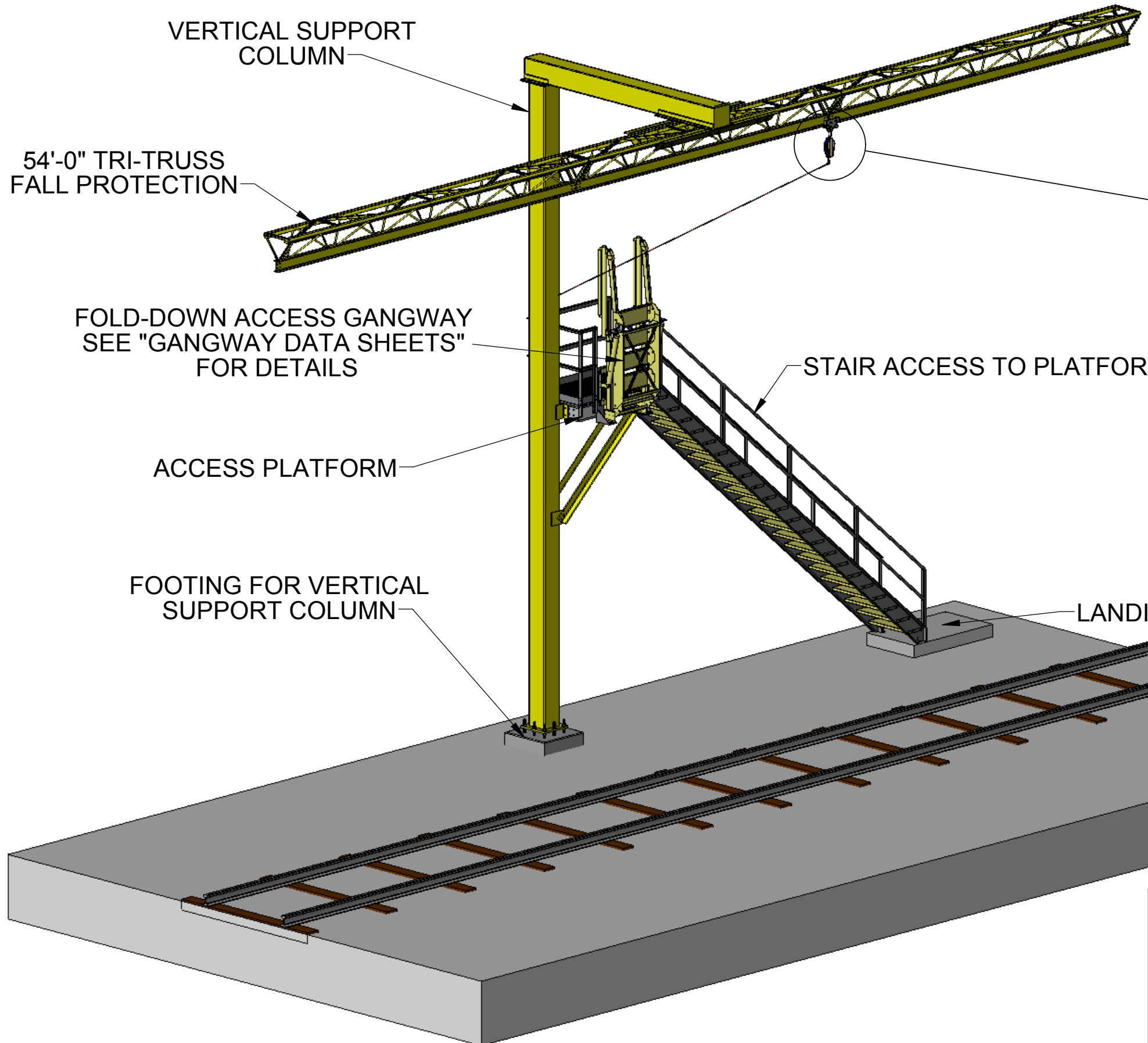


8 7 6 5 4 3 2 1

DETAIL OF STANDARD USER SET



VERTICAL SUPPORT COLUMN

54'-0" TRI-TRUSS FALL PROTECTION

FOLD-DOWN ACCESS GANGWAY SEE "GANGWAY DATA SHEETS" FOR DETAILS

ACCESS PLATFORM

FOOTING FOR VERTICAL SUPPORT COLUMN

STAIR ACCESS TO PLATFORM

LANDING PAD FOR PLATFORM STAIR

FPS TROLLEY

STANDARD USER SET

TAGLINE

NOTE: TAGLINE SYSTEM WILL NOT INTERFERE WITH RAILROAD ENVELOPE

<p>PROPRIETARY AND CONFIDENTIAL</p> <p>COVERED UNDER U.S. PATENTS D444,023 AND 6269,904B1 DESIGN CONFORMS WITH OSHA REGULATION (STD. 29 CFR) STD. NO. 1926.502, TITLED FALL PROTECTION SYSTEM CRITERIA & PRACTICES, SUBPART M, TITLED FALL PROTECTION</p> <p>THE INFORMATION CONTAINED IN THIS DRAWING IS THE SOLE PROPERTY OF FALL PROTECTION SYSTEMS. ANY REPRODUCTION IN PART OR AS A WHOLE WITHOUT THE WRITTEN PERMISSION OF FALL PROTECTION SYSTEMS IS PROHIBITED.</p> <p>DO NOT SCALE DRAWING</p>		
	<p>FOR</p> <p>AR-60</p> <p>GENERAL ARRANGEMENT</p>	
<p>LOCATION</p>		
<p>SIZE</p> <p>B</p>	<p>Quote No. _____</p> <p>Job No. _____</p> <p>Rev. _____</p>	<p>Date _____</p> <p>Date _____</p>
		<p>SHEET 1 / 2</p>

8 7 6 5 4 3 2 1

8 7 6 5 4 3 2 1

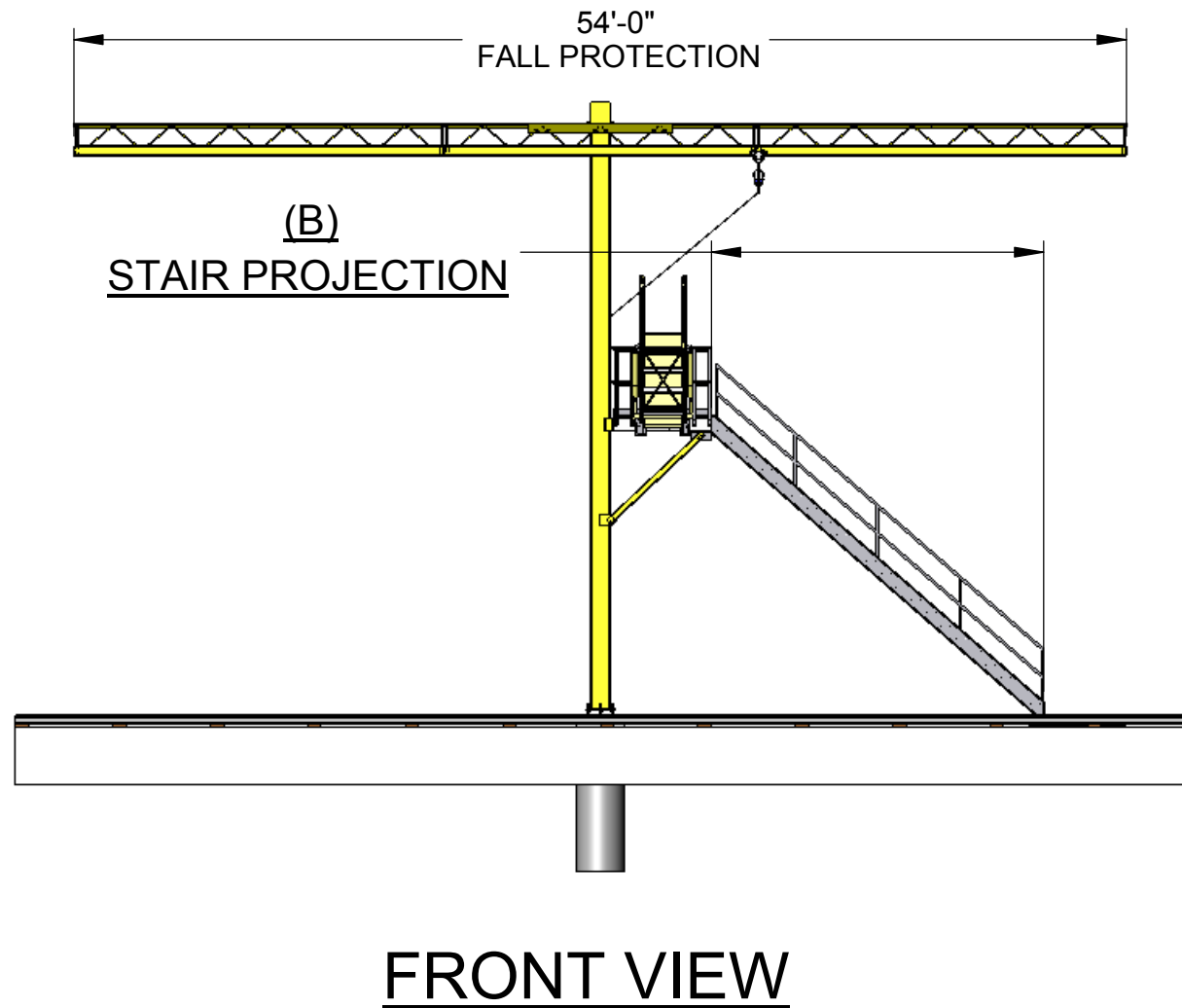
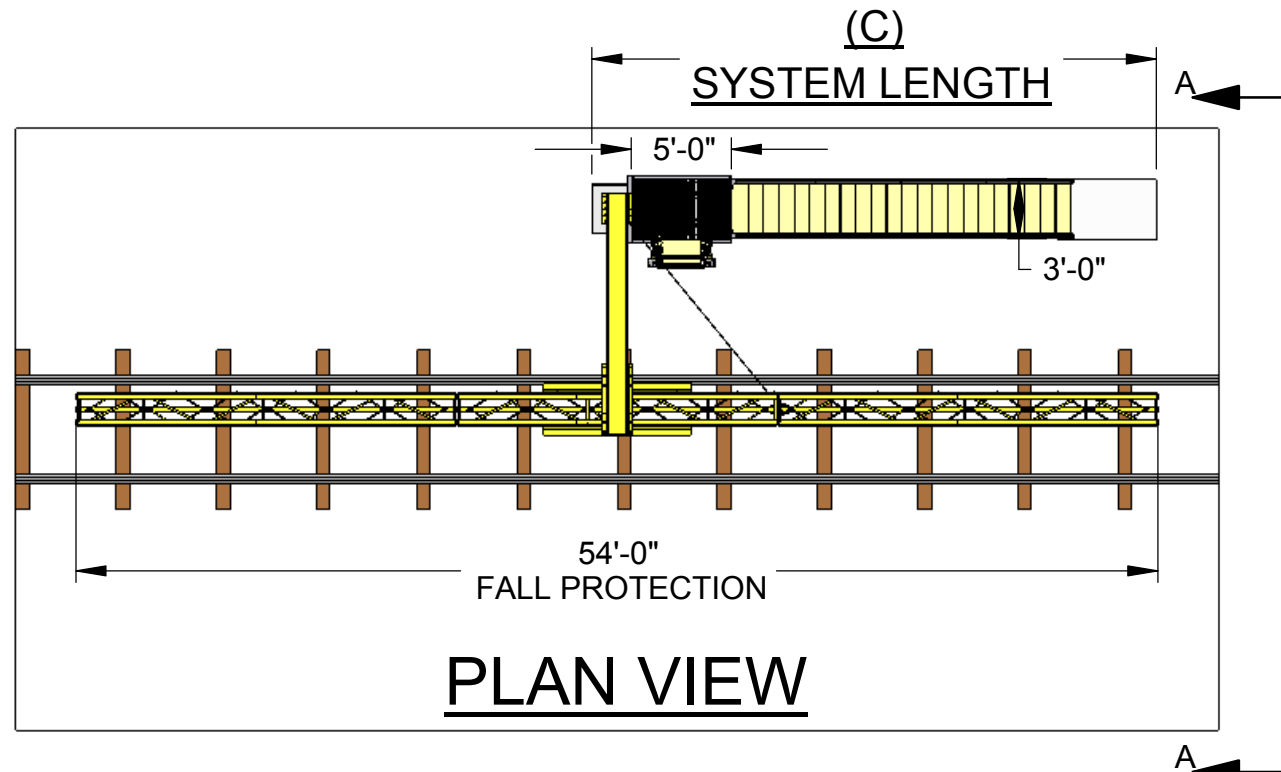
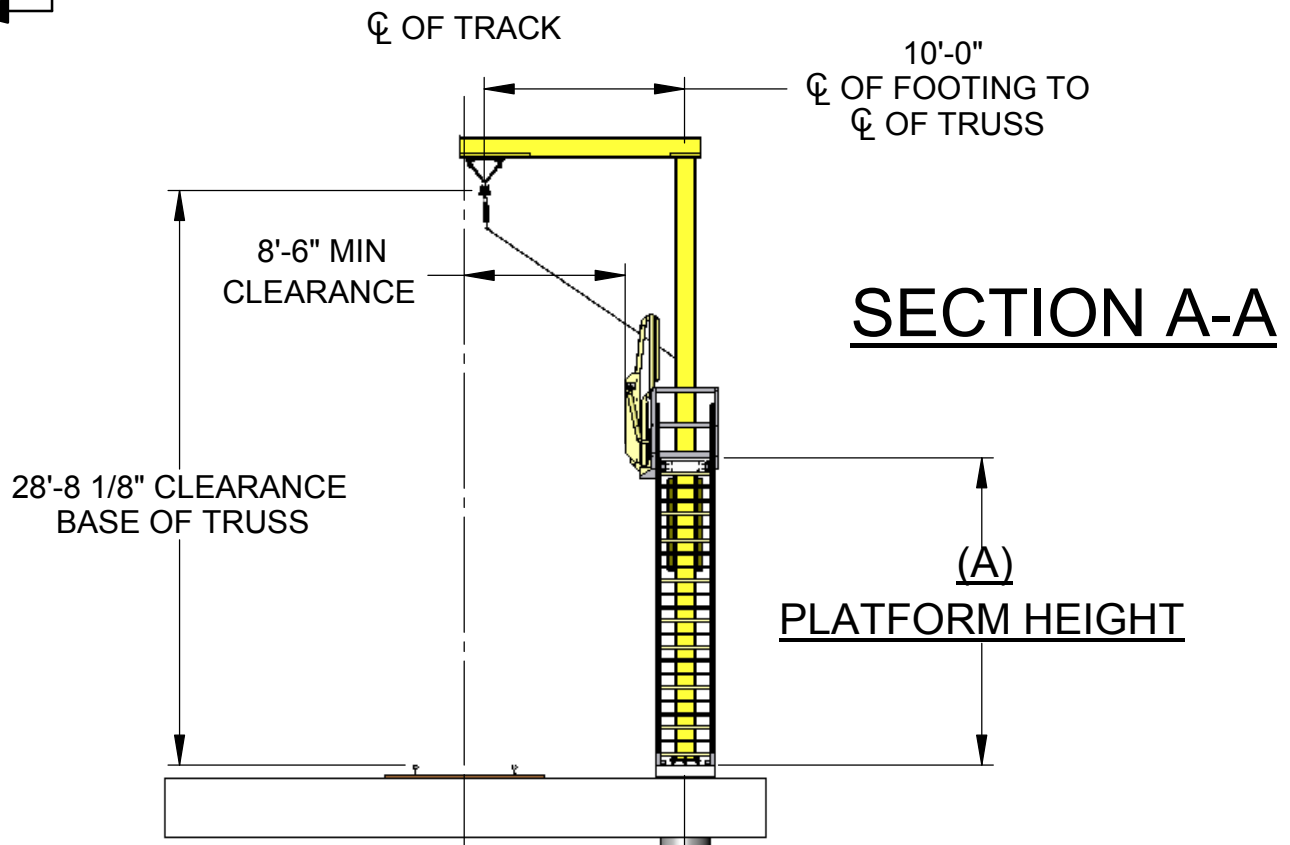


FIG A.
SYSTEM HEIGHTS AND PROJECTIONS

(A) PLATFORM HEIGHT	(B) STAIR STRINGER PROJECTION	(C) OVERALL SYSTEM LENGTH	CENTERLINE OF FOOTING TO CENTERLINE OF LANDING PAD
15'-4"	17'-0"	28'-2"	24'-5"
14'-8"	16'-3"	27'-5"	23'-8"
14'-0"	15'-6"	26'-8"	22'-11"
13'-4"	14'-9"	25'-10"	22'-2"
12'-8"	14'-0"	25'-1"	21'-4"
12'-0"	13'-3"	24'-4"	20'-7"
11'-4"	12'-4"	23'-7"	19'-10"



PROPRIETARY AND CONFIDENTIAL

COVERED UNDER U.S. PATENTS D444,023 AND 6269,904B1
DESIGN CONFORMS WITH OSHA REGULATION (STD. 29 CFR)
STD. NO. 1926.502, TITLED FALL PROTECTION SYSTEM CRITERIA
& PRACTICES, SUBPART M, TITLED FALL PROTECTION

THE INFORMATION CONTAINED IN THIS DRAWING IS
THE SOLE PROPERTY OF FALL PROTECTION SYSTEMS.
ANY REPRODUCTION IN PART OR AS A WHOLE WITHOUT
THE WRITTEN PERMISSION OF FALL PROTECTION SYSTEMS
IS PROHIBITED.

DO NOT SCALE DRAWING

Fall Protection Systems FPS

FOR
AR-60
GENERAL ARRANGEMENT

LOCATION

SIZE **B** Quote No. Job No. Date
Drawn by Rev. Date

SHEET 2 / 2

8 7 6 5 4 3 2 1