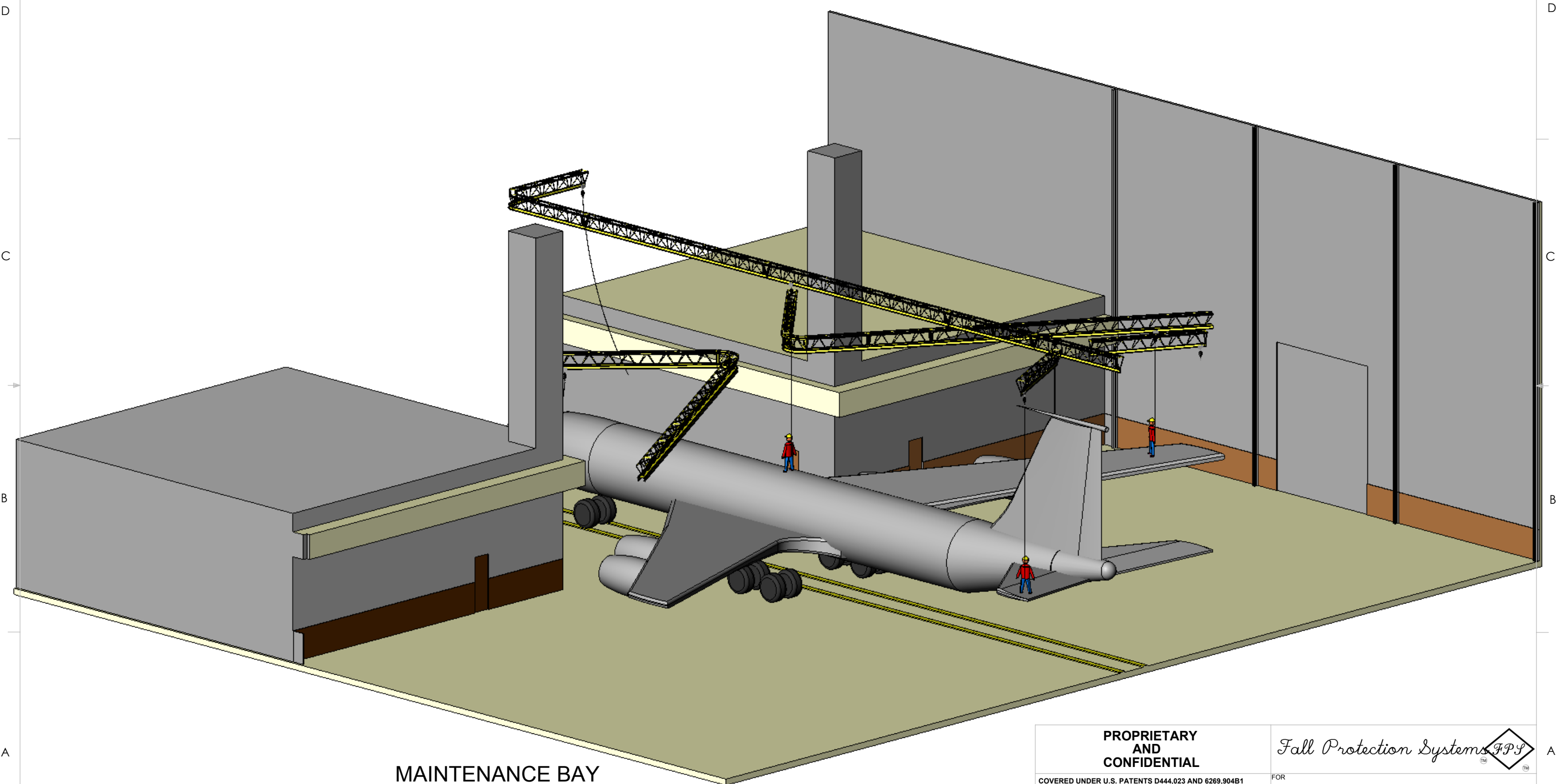


8 7 6 5 4 3 2 1

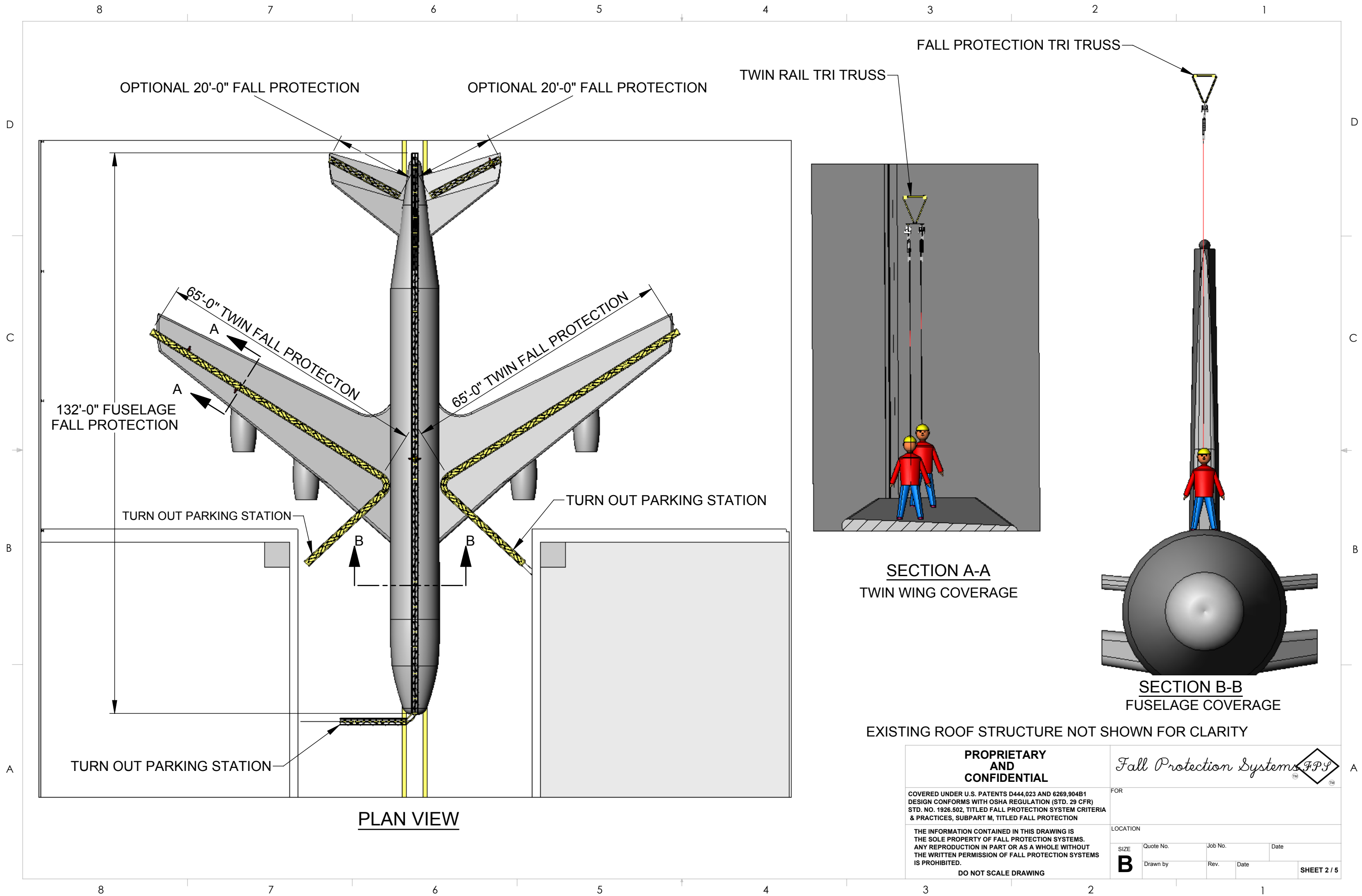
- NOTE:
- (1) EXISTING ROOF STRUCTURE AND NEW FALL PROTECTION TRUSS SUPPORTS NOT SHOWN FOR CLARITY
 - (2) SYSTEM DESIGN WITH OPTIONAL REAR HORIZONTAL STABILIZER PROTECTION PROVIDES COMPLETE FALL PROTECTION COVERAGE
 - (3) SYSTEM TO BE RIGIDLY ATTACHED TO EXISTING ROOF STRUCTURE
 - (4) FOR MAXIMUM CLEARANCE SYSTEM COMPONENTS WILL BE INSTALLED AT HIGHEST ELEVATION EXISTING STRUCTURES WILL ALLOW



**MAINTENANCE BAY
FALL PROTECTION SITE PLAN**

PROPRIETARY AND CONFIDENTIAL		<i>Fall Protection Systems F.P.S.</i>	
COVERED UNDER U.S. PATENTS D444,023 AND 6269,904B1 DESIGN CONFORMS WITH OSHA REGULATION (STD. 29 CFR) STD. NO. 1926.502, TITLED FALL PROTECTION SYSTEM CRITERIA & PRACTICES, SUBPART M, TITLED FALL PROTECTION		FOR	
THE INFORMATION CONTAINED IN THIS DRAWING IS THE SOLE PROPERTY OF FALL PROTECTION SYSTEMS. ANY REPRODUCTION IN PART OR AS A WHOLE WITHOUT THE WRITTEN PERMISSION OF FALL PROTECTION SYSTEMS IS PROHIBITED.		LOCATION	
DO NOT SCALE DRAWING	B	Quote No.	Job No.
		Rev.	Date
			SHEET 1 / 5

8 7 6 5 4 3 2 1



OPTIONAL 20'-0" FALL PROTECTION

OPTIONAL 20'-0" FALL PROTECTION

TWIN RAIL TRI TRUSS

FALL PROTECTION TRI TRUSS

132'-0" FUSELAGE
FALL PROTECTION

65'-0" TWIN FALL PROTECTION

65'-0" TWIN FALL PROTECTION

TURN OUT PARKING STATION

TURN OUT PARKING STATION

TURN OUT PARKING STATION

PLAN VIEW

SECTION A-A
TWIN WING COVERAGE

SECTION B-B
FUSELAGE COVERAGE

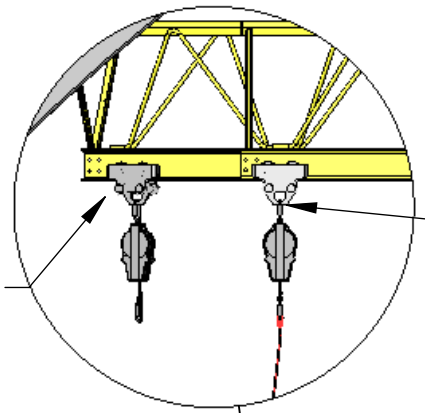
EXISTING ROOF STRUCTURE NOT SHOWN FOR CLARITY

PROPRIETARY AND CONFIDENTIAL		<i>Fall Protection Systems F.P.S.</i>	
COVERED UNDER U.S. PATENTS D444,023 AND 6269,904B1 DESIGN CONFORMS WITH OSHA REGULATION (STD. 29 CFR) STD. NO. 1926.502, TITLED FALL PROTECTION SYSTEM CRITERIA & PRACTICES, SUBPART M, TITLED FALL PROTECTION		FOR	
THE INFORMATION CONTAINED IN THIS DRAWING IS THE SOLE PROPERTY OF FALL PROTECTION SYSTEMS. ANY REPRODUCTION IN PART OR AS A WHOLE WITHOUT THE WRITTEN PERMISSION OF FALL PROTECTION SYSTEMS IS PROHIBITED.		LOCATION	
DO NOT SCALE DRAWING	SIZE B	Quote No. Rev.	Job No. Date
			SHEET 2 / 5

8 7 6 5 4 3 2 1

D

D



REAR STABILIZER USER SET WITH LIFE LINE RETRACTED

FUSELAGE USER SET AT PARKING STATION (NOTE TAG LINE)

EXISTING HEATER

C

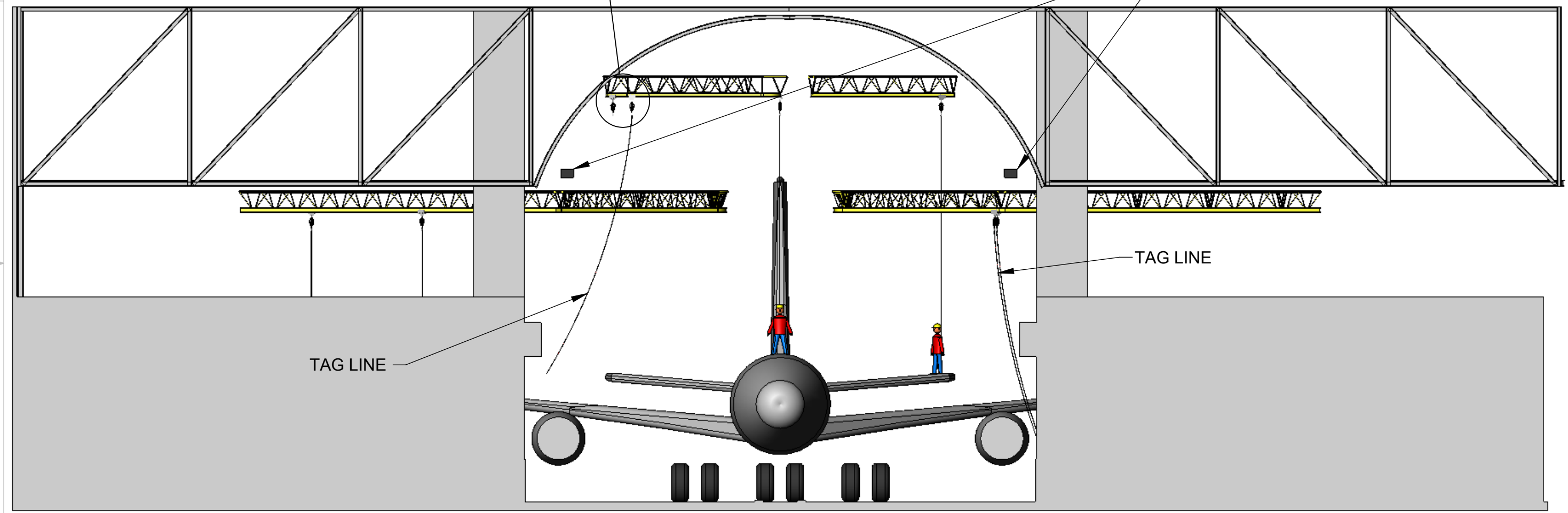
C

B

B

A

A



FRONT ELEVATION VIEW

PROPRIETARY AND CONFIDENTIAL		<i>Fall Protection Systems F.P.S.</i>	
COVERED UNDER U.S. PATENTS D444,023 AND 6269,904B1 DESIGN CONFORMS WITH OSHA REGULATION (STD. 29 CFR) STD. NO. 1926.502, TITLED FALL PROTECTION SYSTEM CRITERIA & PRACTICES, SUBPART M, TITLED FALL PROTECTION		FOR	
THE INFORMATION CONTAINED IN THIS DRAWING IS THE SOLE PROPERTY OF FALL PROTECTION SYSTEMS. ANY REPRODUCTION IN PART OR AS A WHOLE WITHOUT THE WRITTEN PERMISSION OF FALL PROTECTION SYSTEMS IS PROHIBITED.		LOCATION	
DO NOT SCALE DRAWING	SIZE B	Quote No. Rev.	Job No. Date
		Date	SHEET 3 / 5

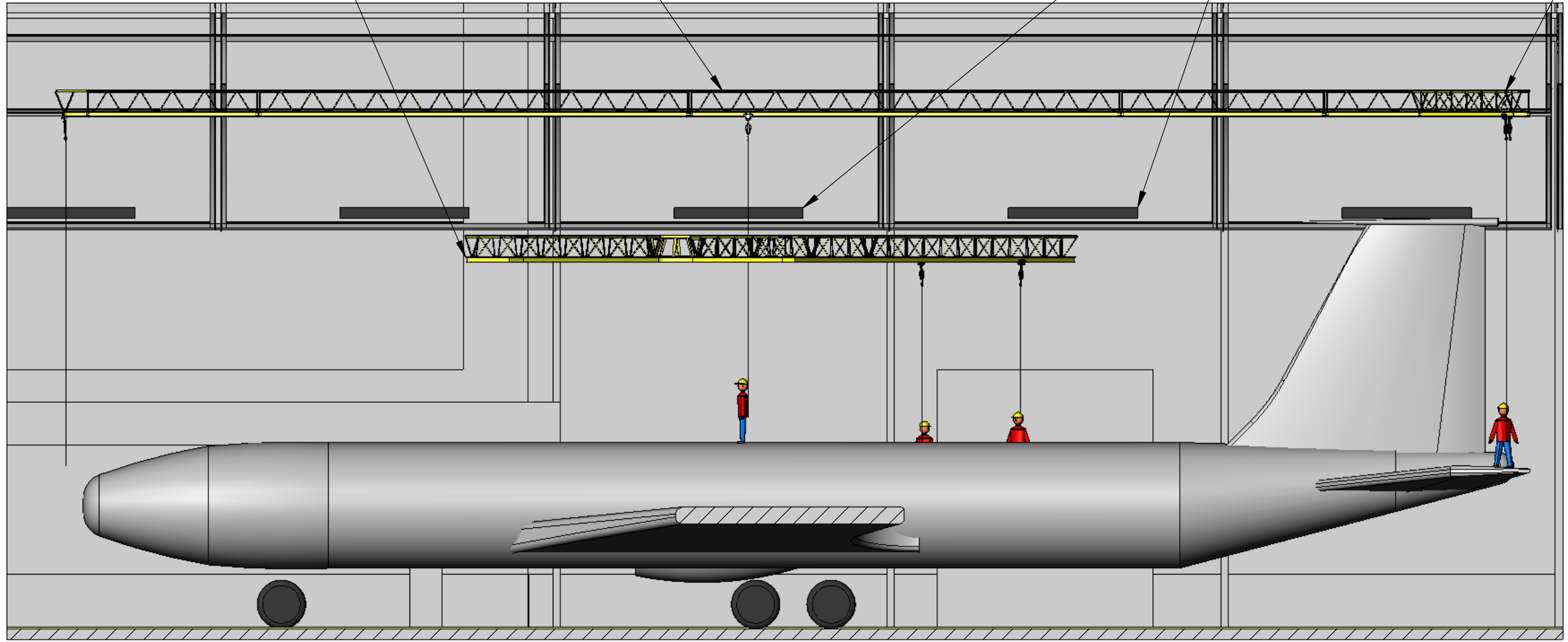
8 7 6 5 4 3 2 1

8 7 6 5 4 3 2 1

D
C
B
A

D
C
B
A

FUSELAGE FALL PROTECTION TRI TRUSS
 TWIN WING FALL PROTECTION TRI TRUSS
 EXISTING HEATER
 OPTIONAL REAR STABILIZER TRUSS



SECTION VIEW

PROPRIETARY AND CONFIDENTIAL		<i>Fall Protection Systems F.P.S.</i>	
COVERED UNDER U.S. PATENTS D444,023 AND 6269,904B1 DESIGN CONFORMS WITH OSHA REGULATION (STD. 29 CFR) STD. NO. 1926.502, TITLED FALL PROTECTION SYSTEM CRITERIA & PRACTICES, SUBPART M, TITLED FALL PROTECTION		FOR	
THE INFORMATION CONTAINED IN THIS DRAWING IS THE SOLE PROPERTY OF FALL PROTECTION SYSTEMS. ANY REPRODUCTION IN PART OR AS A WHOLE WITHOUT THE WRITTEN PERMISSION OF FALL PROTECTION SYSTEMS IS PROHIBITED.		LOCATION	
DO NOT SCALE DRAWING	SIZE B	Quote No. Job No. Date	SHEET 4 / 5
	Drawn by Rev. Date		

8 7 6 5 4 3 2 1

8 7 6 5 4 3 2 1

D

D

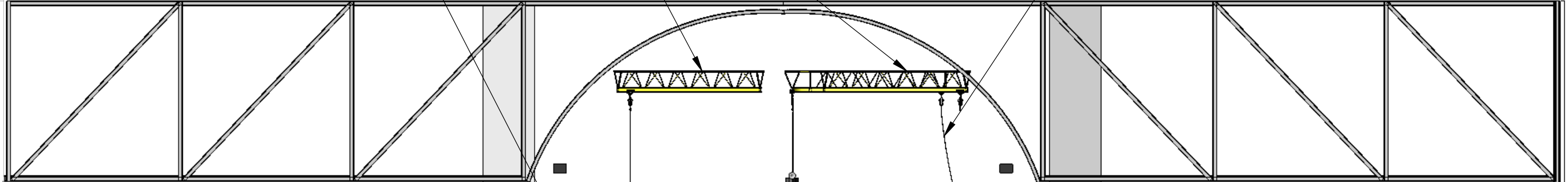
OPTIONAL REAR STABILIZER TRI TRUSS

USER SET AT PARKING STATION WITH TAG LINE

FUSELAGE USER SET AT PARKING STATION WITH TAG LINE

C

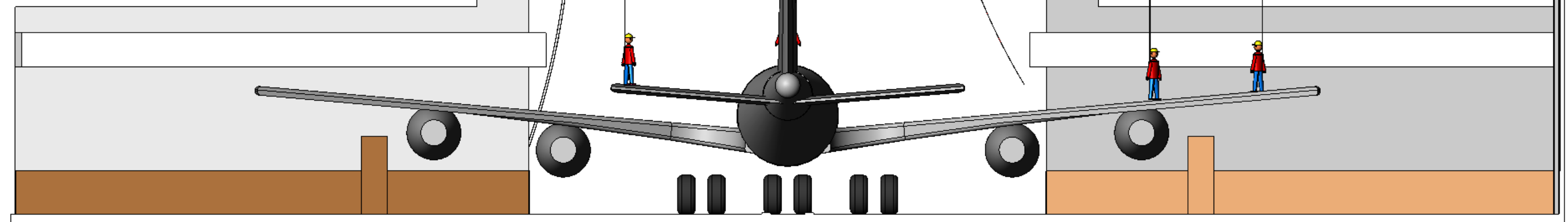
C



TWIN RAIL WING FALL PROTECTION TRI TRUSS

B

B



REAR ELEVATION VIEW

A

A

PROPRIETARY AND CONFIDENTIAL

Fall Protection Systems F.P.S.

COVERED UNDER U.S. PATENTS D444,023 AND 6269,904B1
DESIGN CONFORMS WITH OSHA REGULATION (STD. 29 CFR)
STD. NO. 1926.502, TITLED FALL PROTECTION SYSTEM CRITERIA
& PRACTICES, SUBPART M, TITLED FALL PROTECTION

THE INFORMATION CONTAINED IN THIS DRAWING IS
THE SOLE PROPERTY OF FALL PROTECTION SYSTEMS.
ANY REPRODUCTION IN PART OR AS A WHOLE WITHOUT
THE WRITTEN PERMISSION OF FALL PROTECTION SYSTEMS
IS PROHIBITED.

DO NOT SCALE DRAWING

FOR			
LOCATION			
SIZE	Quote No.	Job No.	Date
B	Drawn by	Rev.	Date

8 7 6 5 4 3 2 1