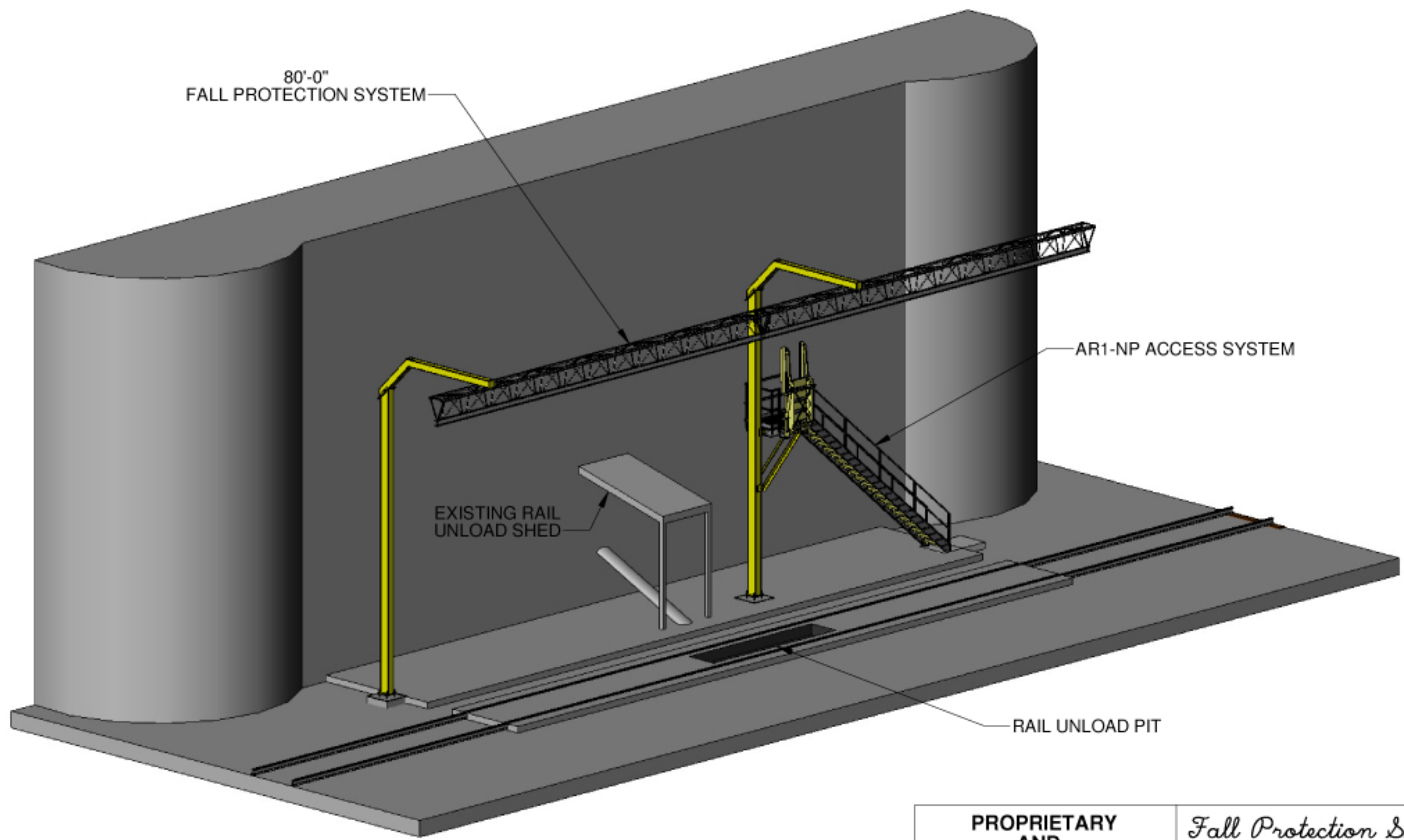


8 7 6 5 4 3 2 1

D  
C  
B  
A



NOTE: GANGWAY TO BE FLT-5A-24


Rev.	2	Date	
------	---	------	--

**PROPRIETARY AND CONFIDENTIAL**

COVERED UNDER U.S. PATENTS D444,023 AND 6299,904B1  
 DESIGN CONFORMS WITH OSHA REGULATION (STD. 29 CFR)  
 STD. NO. 1926.502, TITLED FALL PROTECTION SYSTEM CRITERIA  
 & PRACTICES, SUBPART M, TITLED FALL PROTECTION

THE INFORMATION CONTAINED IN THIS DRAWING IS  
 THE SOLE PROPERTY OF FALL PROTECTION SYSTEMS.  
 ANY REPRODUCTION IN PART OR AS A WHOLE WITHOUT  
 THE WRITTEN PERMISSION OF FALL PROTECTION SYSTEMS  
 IS PROHIBITED.

DO NOT SCALE DRAWING

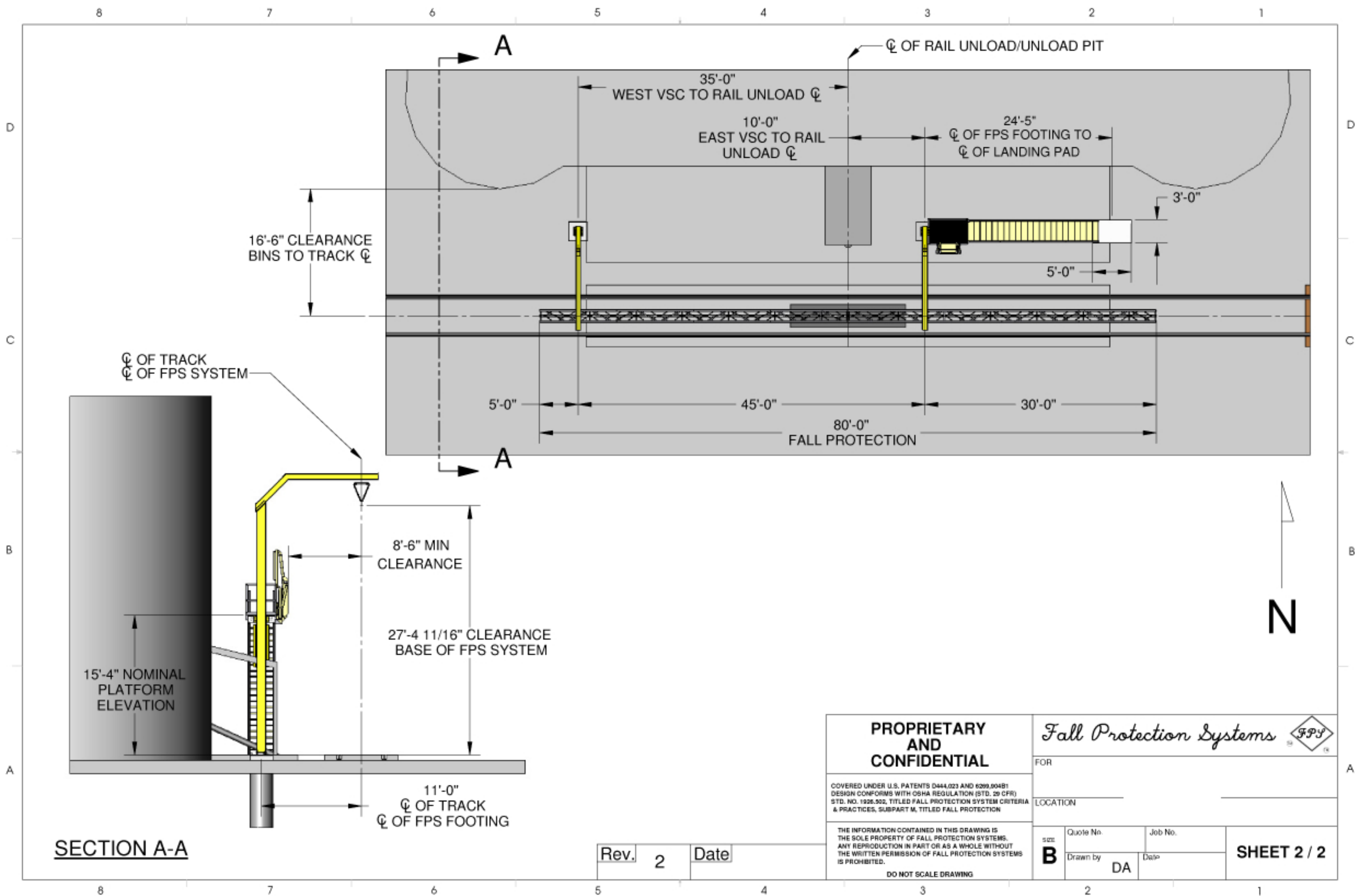
*Fall Protection Systems* 

FOR \_\_\_\_\_

LOCATION \_\_\_\_\_

size <b>B</b>	Quote No.	Job No.	<b>SHEET 1 / 2</b>
	Drawn by DA	Date	

8 7 6 5 4 3 2 1



**SECTION A-A**


Rev.	2	Date	
------	---	------	--

**PROPRIETARY AND CONFIDENTIAL**

COVERED UNDER U.S. PATENTS D444,023 AND 6299,904B1  
 DESIGN CONFORMS WITH OSHA REGULATION (STD. 29 CFR)  
 STD. NO. 1926.502, TITLED FALL PROTECTION SYSTEM CRITERIA  
 & PRACTICES, SUBPART M, TITLED FALL PROTECTION

THE INFORMATION CONTAINED IN THIS DRAWING IS  
 THE SOLE PROPERTY OF FALL PROTECTION SYSTEMS.  
 ANY REPRODUCTION IN PART OR AS A WHOLE WITHOUT  
 THE WRITTEN PERMISSION OF FALL PROTECTION SYSTEMS  
 IS PROHIBITED.

DO NOT SCALE DRAWING

**Fall Protection Systems** 

FOR \_\_\_\_\_

LOCATION \_\_\_\_\_

size <b>B</b>	Quote No.	Job No.	<b>SHEET 2 / 2</b>
	Drawn by DA	Date	